



3221 McAlister Farm Lane

Uncompromising Custom Provincial Home
McAlister Farms Neighborhood, Hampton, PA



This custom designed brick and stone home is situated on a 1 acre park-like lot located on one of Hamptons most desirable subdivisions. From the Huge gourmet kitchen to the covered flagstone patio this home says welcome the moment you enter...

Don't wait long. Call Linda today ...



LINDA DIBUCCI
REALTOR®

COLDWELL BANKER
REAL ESTATE SERVICES
4960 Route 8
Allison Park, PA 15101

Business: 412.487.0500 Ext. 221
Cell: 412.519.5800
Fax: 724.443.0921

linda.dibucci@pittsburghmoves.com
pittsburghmoves.com



Owned And Operated By NRT LLC.

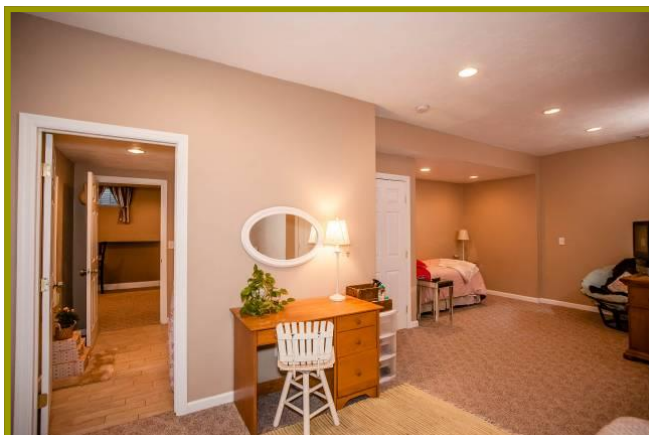
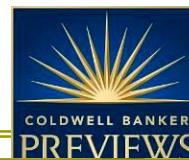
3221 McAlister Farm Lane, Hampton, Pa

Marketed by Linda DiBucci: Cell (412) 519-5800 Office (412) 487-0500 x221



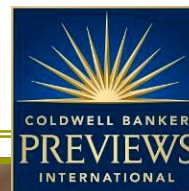
3221 McAlister Farm Lane, Hampton, Pa

Marketed by Linda DiBucci: Cell (412) 519-5800 Office (412) 487-0500 x221



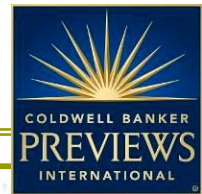
3221 McAlister Farm Lane, Hampton, Pa

Marketed by Linda DiBucci: Cell (412) 519-5800 Office (412) 487-0500 x221



3221 McAlister Farm Lane, Hampton, Pa

Marketed by Linda DiBucci: Cell (412) 519-5800 Office (412) 487-0500 x221



LINDA DIBUCCI
REALTOR®

COLDWELL BANKER
REAL ESTATE SERVICES
4960 Route 8
Allison Park, PA 15101

Business: 412.487.0500 Ext. 221
Cell: 412.519.5800
Fax: 724.443.0921
linda.dibucci@pittsburghmoves.com
pittsburghmoves.com



Owned And Operated By NRT LLC.



Price: \$899,000	http://realestateimaging.com/properties/3221-mcalister-farm-lane-hampton-pa/		
Property Details:	Interior Features:		
<p>Structure/Lot Information: Construction Type: Stone, Brick Garage Description: Attached Garage 3 spaces Cooling Type: Central, Electric Heating Delivery: Gas, Forced Air</p> <p>Style: Provincial Year Built: 2003 Roof: Asphalt Stories: 2 Water Type: Public Sewer Type: Public</p> <p>County: North Allegheny Area: Hampton School District: Hampton</p> <p>Lot size: 1.0 Lot Dimensions: 275x118x222x237</p>	<p>Rooms:</p> <p>Bedroom 1: Upper 22x16 Bedroom 2: Upper 15x14 Bedroom 3: Upper 14x14 Bedroom 4: Upper 13x12 Bedroom 5: Lower Level 24x12</p> <p>Living Room: Main 16x14 Family Room: Main 22x16 Kitchen: Main 30x16 Den: Main 14x13 Dining Room: Main 16x14 Entry: Main 15x13 Game Room: Lower Level 35x20</p> <p>Full Baths: 4 full 1 partial Flooring: Hardwood Fireplaces: 1 Family room</p>	<p>Interior Features: Auto Door on Garage, Convection Oven, Disposal, Dishwasher, Gas Cook Top, Jet Spray Tub, Microwave Oven, Refrigerator, Wet Bar, Pantry, Kitchen Island, Screens, Window Treatments</p>	



All information provided is deemed reliable but is not guaranteed and should be independently verified. No reproduction, distri-