



# Homes by The Miller Team



*Generations serving you  
for generations to come...*

Hampton Office  
4960 Route 8  
Allison Park, PA 15101

Office: 412 487-0500  
Linda: 412 841-3282  
Jaclyn: 412 841-2862



**217 Iola Street, Glenshaw, PA**  
**Call for a personal tour today**  
**(412) 841-2862**

**COLDWELL  
BANKER**



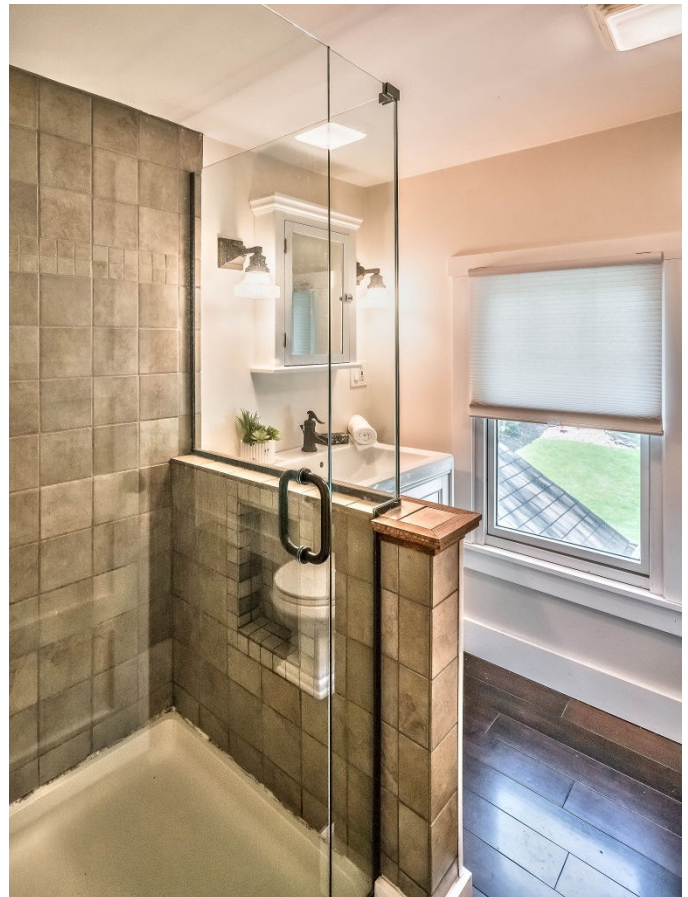






**217 Iola Street,** Glenshaw, PA  
Call Linda or Jaclyn Miller: Cell (412) 841-3282 Office (412) 487-0500

**COLDWELL  
BANKER** 





# 217 Iola Street, Glenshaw, PA

Call Linda or Jaclyn Miller: Cell (412) 841-3282 Office (412) 487-0500

**COLDWELL  
BANKER**



## Interior

**Number of Rooms:** 9

**Interior Features:** Automatic Door on Garage, Dishwasher, Disposal, Gas Stove, Microwave Oven, Screens, Window Treatments

**Fireplace:** Yes

**Number of Fireplaces:** 1

**Fireplace(s):** LOG

**Flooring:** Ceramic Tile, Hardwood, Other

## Heating & Cooling

**Cooling Type:** Window Air Conditioning

**Heating Type:** Gas, Hot Water

**Heating Fuel:** Gas

## Utilities

**Sewer:** Public

**Water:** Public

## Rooms

### BATHROOMS

**Total Bathrooms:** 2

**Full Bathrooms:** 2

### BEDROOMS

**Total Bedrooms:** 4

## Parking

**Garage:** Yes

**Garage Spaces:** 2

**Garage Description:** Detached Garage

## Location

**Area:** Shaler

**County:** North Allegheny

**Driving Directions:** NORTH MT ROYAL BLVD, LEFT ON IOLA STREET, HOME ON LEFT

**Transportation:** YES

## School Information

**School District:** Shaler Area

## Structural Information

**Architectural Style:** Colonial

**Description/Design:** Residence/Single Family

**Construction Status:** Existing

**Construction:** Brick

**Basement:** Yes

**Basement Desc.:** FULL

**Roof:** Asphalt

**Stories Description:** 1 1/2 Story

**Year Built:** 1925

## Lot Features

**Lot Dimensions:** 60 x 182

## Financial Considerations

**Tax Amount:** \$4,335

## Disclosures and Reports

**Unit/Blk/Lot:** 0433-F-00076-0000-00



All information provided is deemed reliable but is not guaranteed and should be independently verified. No reproduction, distribution, or transmission of this information is permitted without the written permission from the MLS Participant.